

SIMP-SON's Welcome 23-24 WiSe



13.10.2023

AGENDA

- What is SIMP-SON?

About Magdeburg

Living in Germany

OVGU `Survival Kit`

SIMP-SON Events`



WHAT IS SIMP-SON?



Students' International Mentoring Program
Social Organizational Network

WHAT WE DO



We offer a **mentoring Buddy program** with higher semester German & International students

We **provide cultural information** and networking opportunities for students

Our mission is to **help all ISP students** feel welcome and have a smooth transition into the new environment at OVGU





Maria, IBE – SIMP-SON
Coordinator



Grit Voigt - Office of International
Affairs & ISP Coordinator



Alina, IBE – SIMP-SON
Coordinator

SIMP-SON Team

CONTACTS



ISP Office in **Building 22, Room B 006**

Advising hours: Zoom on Tuesdays, Thursdays from 10 – 11:30 am (without appointment)

Email: isp@ovgu.de

Instagram: @ispofficeovgu

About Magdeburg

MAGDEBURG



https://en.wikipedia.org/wiki/Magdeburg#/media/File:Vista_Magdeburg.jpg



Location:
Saxony
Anhalt

Population: ~
240,000

**OVGU
Students:**
~ 12,000

**Elbe, parks,
unique
architecture**

PUBLIC TRANSPORT IN MD



Tram and bus stations next to university: Universität, Universitätsbibliothek, Askanischer Platz

Online: insa.de/bin/query.exe/dn

Also available: INSA App (Google Play, App Store)

Schedules change for weekends, holidays, and at nights after 11:00 pm

Be aware of constantly changing routes and times due to construction work in MD



<https://www.magdeburger-news.de/site/mdn/home/news/2017/06/13/143651/portrait/Tram-LED.jpg>

TRANSIT IN MD



BUSES & TRAMS

Valid student ID

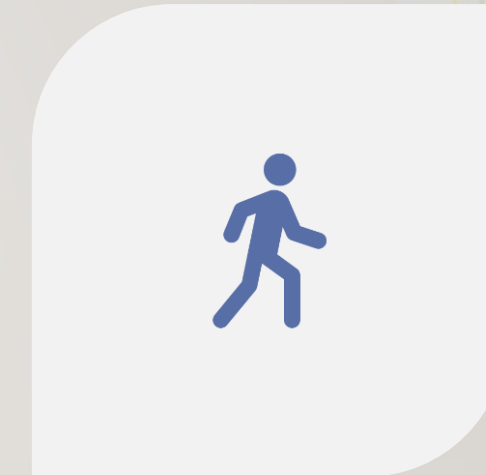


BICYCLE (E-ROLLERS)

(Lock it well – often stolen!)

MIND THE BIKE LANES

and traffic rules!



WALKING

Most places can be reached easily by walking

SHOPPING IN MD



Malls: Allee-Center, City Carré, Flora Park, etc



IMPORTANT: Sundays - closed



Supermarkets usually open from 8:00 am to 8:00 pm
Some of them 10:00 pm



Small 'Spätshops' (Späti) at Uni etc.



HAVING FUN IN MD



Campus - Unitheke, Moonlight, Baracke, Festung Mark

Hasselbachplatz - bars and cafes like Hyde, Stern Bar

SIMP-SON - trips and events for ISP students

IKUS - events for international students www.ikus.ovgu.de/

Theatre, museums, cinema, clubs (Kunstkantine, Insel, Datsche...)

SPORTS IN MD

How to meet people in Germany?

+ CLUBS! (Vereine)

+ Volunteer Initiatives!



Low-cost sports activities for students at university:

www.spoz.ovgu.de

(registration via uni-account)

Private gyms e.g. Easy Fitness, McFit, ElbeFitness, Elbeschwimmhalle, dance school, football clubs

SAFETY IN MD

SOS:

<https://www.grs.ovgu.de/SOS.html>



Is it safe to walk in Magdeburg at night, alone? – Safety precautions

Doctor's Appointments (find English speaking Doctors)

Make an appointment in advance – not urgent

Sprechstunden - show up when the office opens

Emergency numbers:

Police (110)

Fire department and ambulance (112) – urgent cases only

Further details for medical assistance etc:

<http://www.ikus.ovgu.de/en/Offer/Advice+Support/FirstSteps/Emergency+Numbers.html>



<https://www.doatrip.de/en/germany/saxony-anhalt/magdeburg/magdeburg-christmas-market.html>



<https://www.magdeburg.de/Start/Bürger-Stadt/Stadt/Sehenswürdigkeiten/index.php?La=1&NavID=37.445&object=tx37.6876.1&ModID=9&FID=115.350.1>



<https://www.travelcircus.de/urlaubsziele/magdeburg-sehenswuerdigkeiten/>

Living in Germany

GENERAL INFO



Student visa holders are **not allowed** to earn more than 520 €/month and work more than 20h/week

Liability insurance is highly recommended – insuring self-induced harm (Privathaftpflicht)

Household insurance (fees depend on insurable value and location) may protect your valuable goods in case of break-ins, etc. (Hausratsversicherung)

JOB SEARCH



Job Websites – Stepstone, Indeed, Jobble etc

Company Contact Fair (Firmenkontaktmesse) – 18 October on
Festung Mark

<https://firmenkontaktmesse.ovgu.de/arbeitgeberliste.html>

OVGU Career Service -

<https://www.ovgu.de/careerservice.html>

LEGALITIES



IMPORTANT: Mind the...

duration of contracts (cell phone, internet, gym etc.) and cancellation periods!

IMPORTANT: MAKE COPIES OF ALL DOCUMENTS AND KEEP PAPER RECORDS OF EVERYTHING!

BROADCASTING INTERNET & TV TAX - GEZ



German broadcasting and television fee are to be paid as a lump-sum fee per apartment. The fee amounts to **18,36€** per month!

Fee may be paid monthly, quarterly or yearly – you choose!

RECYCLING IN GERMANY



Yellow bin:

Metal, plastic, packages, cosmetic/detergent boxes, cartons with metal/plastic sheet (milk cartons), foams

Brown bin:

Food waste including meat and bones, flower waste, hair, feathers

Blue bin:

Paper, newspapers, carton boxes, flyers, egg cartons

Glass containers:

Glass bottles and jars (no dishes, drinking glasses, porcelain, light bulbs)

Black bin:

Everything else



Disposing your waste wrongly will risk a penalty!

LIVING IN GERMANY



German language - do not hesitate to show off your German skills

Mind people's privacy

Don't be too shy – get contact

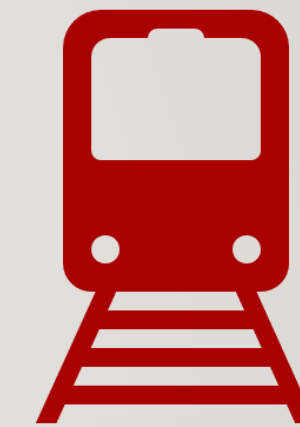
Make friends from everywhere, possible in our studies

German culture: Christmas markets, Oktoberfest, Easter, Flohmärkte

LIVING IN GERMANY



Deutschland-Ticket for 49€



- Everything except ICE, IC, and other fast trains
- Buy the ticket whenever you want (! still pay the whole amount !)
- Cancellation for the next month: **before the 10th of the current month**
 - submit a form online through the app
 - works as a subscription

OVGU `Survival Kit`

EXAMINATIONS



MIND DEADLINES

All year round:
Check your emails
regularly



REGISTRATION PERIOD:

November 15st

-

November 30th



SEMESTER BREAK:

Depends
(March, August)



EXAMS:

JANUARY
29TH 2024

-

FEBRUARY
17TH 2024

FEM STUDENTS ORGANIZATIONS



SIMP-SON – networking events, buddy program, cultural exchange

FaraWiwi – The Student Council of the Faculty of Economics

X-Plor e.V. – in the field of production, logistics, operational research

STORM – implementing theoretical marketing knowledge

ENACTUS – largest student entrepreneurship initiative in the world

IMPORTANT THINGS TO KNOW



Immatrikulationsbescheinigung – Certificate of enrollment

myOVGU – study related documents

Prüfungsamt – Examination Office (each Faculty has their own)

Sickness – stay at home

WiSe / SoSe - Winter and Summer semester

Matrikelnummer – Matriculation number, student ID

USEFUL APPS FOR STUDENTS



Welcome to OVGU

Tien Do Nam

4.5 ★

17 reviews ⓘ

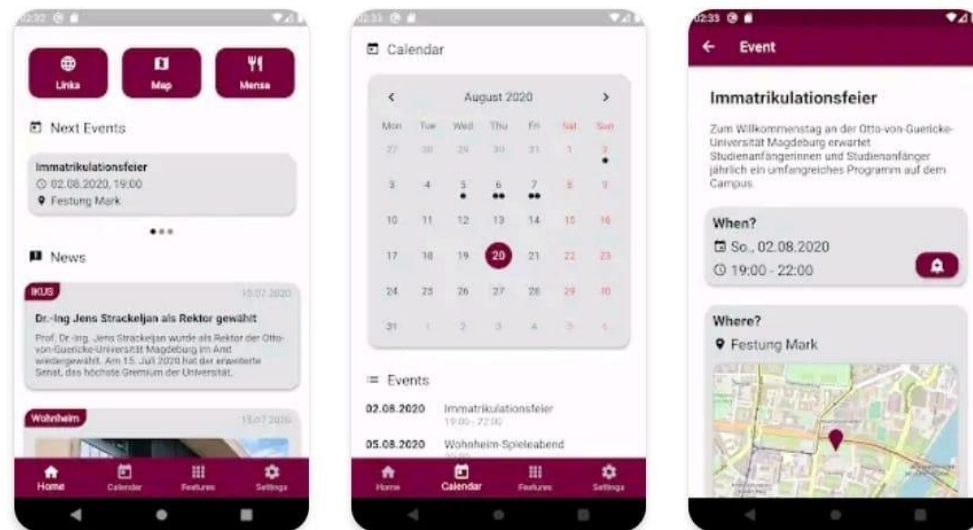
1K+

Downloads



USK: All ages ⓘ

Install



UNiDAYS: Student Shopping App

UNiDAYS

Uninstall

Open

4.4 ★

11K reviews ⓘ

1M+

Downloads



USK: Ages 12+ ⓘ



UniNow

UniNow GmbH

In-app purchases

Uninstall

Open

4.0 ★

2K reviews ⓘ

100K+

Downloads



USK: All ages ⓘ



SIMP-SON Events

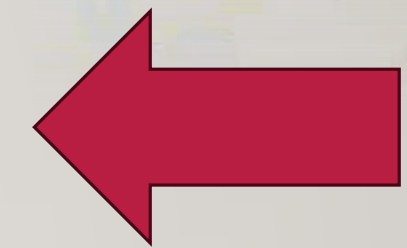
WHAT WE PLAN TO OFFER



Upcoming events:

- Hiking trip to the Harz mountains (15.10)
- Trip through Saxony-Anhalt
- BBQs
- Christmas Party (08.12)
- International Dinners & Potlucks
- Fundraisers
- Workshops and intercultural info sessions and talks
- Competitions and challenges on Instagram
- Buddy mentoring program
- & more

15.10., Sunday 9:30 – 19:00	Central train station Magdeburg	SIMP-SON Goes Hiking. An event around “Thale” with your student fellows. (IBE, IMME, FINEC, ORBA, EPA). Registration required: is@ovgu.de ; fee: 5€
25.10., Wednesday 15:00-17:00	OVGU library, Conference Room	Introduction to the OVGU’s Library System Dr. Christina Lücke, FEM representative Open to all FEM students. English session. Registration: isp@ovgu.de
03 .11., Friday 13:00 – 14:00	building 22, room tba	Opening: FEM’s International Lunch Hour Registration: isp@ovgu.de
10.11., Friday 13:00 – 15:00	Zoom: Meeting-ID: 640 7298 0658; Code: 080938	The FEM’s Examination System and the Recognition of Credit Points PD Dr. habil. Toni Richter, Exam Office Supervisor
10.11., Friday 16:00 – 18:00	building 32, IBZ, Conference Room	SIMP-SON’s Introduction Event: Student Organizations at OVGU, Study Group Start, Presentation “Studying in Germany – DYK information” ... Registration: isp@ovgu.de



Full program:

https://www.isp.ovgu.de/manec_media/Semesterstart/WS+2023+24/SIMP_SON+Events+WS23+24+2709-p-4232.pdf

CLUB OF INTERNATIONAL STUDENTS (CIS)



What is it about?

Discuss problems/issues that you face as an international student and find the solution to it
Make an impact on the international campus of OVGU

Where?

G22

When?

Every 2nd Thursday of the month at 16:00, **First meeting – 9 Nov**



WHAT ABOUT YOU...

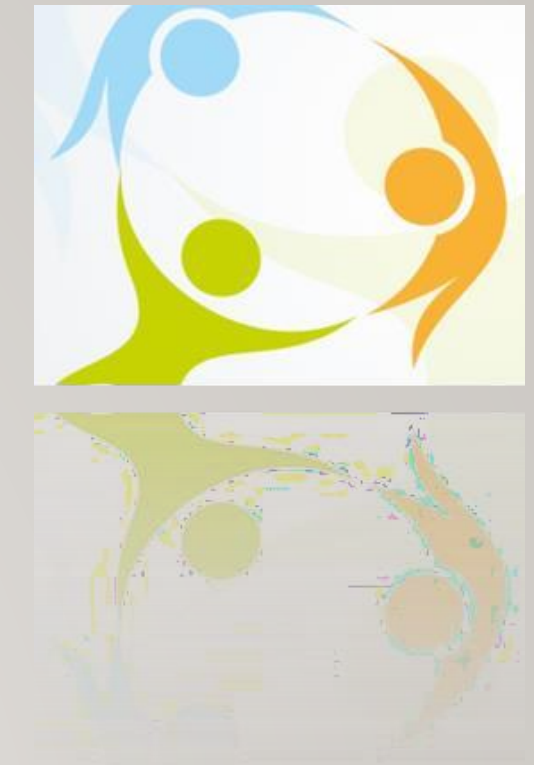


Do you have an **idea** for the student networking/educational event?

Do you want to **make a change** at the university but do not know how?

Then write an email to the isp@ovgu.de and **SIMP-SON** team will help **you** to fulfil your idea

IMPORTANT LINKS



- Isp.ovgu.de → Newsletter, Welcome Hall, etc.
- Library book search link: <https://www.ub.ovgu.de/Literatursuche.html> (then click on Bibliothekskatalog (OPAC))
- Sprachzentrum (language courses) <http://www.sprz.ovgu.de/Fremdsprachen/Deutsch+als+Fremdsprache.html>
- Sports registration: <https://www.spoz.ovgu.de/>
- LSF: <https://lsf.ovgu.de/qislsf/rds?state=user&type=0>
- MVB transportation (schedules and routes): <https://www.mvbnet.de/>
- International students club: <https://www.ikus.ovgu.de/>

Thank you for your attention!



<https://i.pining.com/564x/8a/89/e2/8a89e20255bf9c1fd19c6d8e4b8fdb23.jpg>